

Manufacturer	Implant	Torque (Ncm)	Torque Settings	Driver & Head
BioHorizons	Internal 3.5, 4.5, 5.7	30 Ncm	0.050" (1.25 mm) Hex	●
	Tapered Internal 3.5, 4.5, 5.7	30 Ncm	0.050" (1.25 mm) Hex	●
	External Implant 3.5	30 Ncm	0.050" (1.25 mm) Hex	●
	External Implant 4.0, 5.0	30 Ncm	0.050" (1.25 mm) Hex	●
Biomet 3i	Certain™ 3.25, 4.0, 4/3, 5.0, 5/4, 6.0	20 Ncm	0.048" Hex	●
	Certain™ Prevail™ 3/4/3 (3.4), 4/5/4, 5/6/5, 4/3, 5/4, 6/5	20 Ncm	0.048" Hex	●
	Certain™ XP 4/5, 5/6	20 Ncm	0.048" Hex	●
	Miniplant™ 3.25	20 Ncm	0.048" Hex	●
	Osseotite™ 3.75, 4.0, 5.0, 6.0	20 Ncm	0.048" Hex	●
	Osseotite™ XP 4/5, 5/6	20 Ncm	0.048" Hex	●
Dentsply	ANKYLOS® C/X – C/ 3.5, 4.5, 5.5, 7.0 (non-indexed)	15 Ncm	1.0 mm Hex	●
	ANKYLOS® C/X – /X 3.5, 4.5, 5.5, 7.0 (indexed)	15 Ncm	1.0 mm Hex	●
	OsseoSpeed™ EV 3.0 – Green	25 Ncm	0.050" Hex	●
	OsseoSpeed™ EV 3.6 – Purple	25 Ncm	0.050" Hex	●
	OsseoSpeed™ EV 4.2 – Yellow	25 Ncm	0.050" Hex	●
	OsseoSpeed™ EV 4.8 – Blue	25 Ncm	0.050" Hex	●
	OsseoSpeed™ EV 5.4 – Brown	25 Ncm	0.050" Hex	●
	OsseoSpeed™ Profile EV 4.2 Yellow	25 Ncm	0.050" Hex	●
	OsseoSpeed™ Profile EV 4.8 Blue	25 Ncm	0.050" Hex	●
	OsseoSpeed™ / OsseoSpeed™ TX 3.0 – Yellow	15 Ncm	0.050" Hex	●
	OsseoSpeed™ / OsseoSpeed™ TX 3.5, 4.0 – Aqua	20 Ncm	0.050" Hex	●
	OsseoSpeed™ / OsseoSpeed™ TX 4.5, 5.0 – Lilac	25 Ncm	0.050" Hex	●
	OsseoSpeed™ 4.0 - Blue (Previous)	25 Ncm	0.050" Hex	●

## Implant Torque Specification Guide

Ensure you are applying the right amount of torque for your patient's implant restoration courtesy of Burdette Dental Lab.

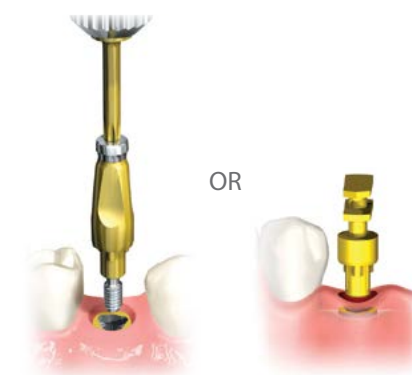
**Questions? Call Burdette at 1-800-624-5301**

### Impression Techniques - Closed Tray Instructions

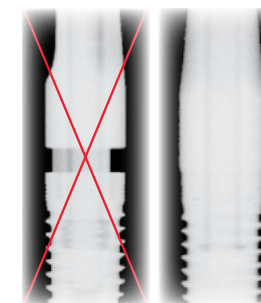
**Step 1**  
Remove healing abutment



**Step 2**  
Insert closed-tray coping—OR—  
Use plastic impression tray



**Step 3**  
Confirm proper seating



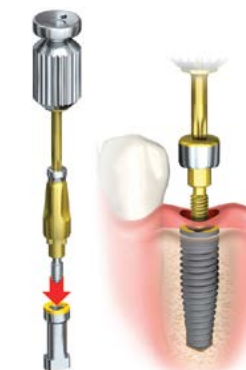
**Step 4**  
Block out driver indentation



**Step 5**  
Inject impression material



**Step 6**  
Replace healing abutment



**Step 7**  
Place replica in impression



Manufacturer	Implant	Torque (Ncm)	Torque Settings	Driver & Head
Dentsply Cont.				
	OsseoSpeed™ TX Profile 4.5, 5.0	25 Ncm	0.050" Hex	⬢
	XIVE® S 3.0	24 Ncm	1.22 mm Hex	⬢
	XIVE® S 3.4, 3.8, 4.5, 5.5	24 Ncm	1.22 mm Hex	⬢
	FRIALIT™ 3.4, 3.8, 4.5, 5.5	24 Ncm	1.22 mm Hex	⬢
Nobel Biocare®				
	Angulated Screw Channel	35 Ncm	Nobel Biocare® Omnigrip	●
	NobelActive™ 3.0	15 Ncm	Nobel Biocare® Unigrip	★
	NobelActive™/NobelReplace™ Conical Connection NP 3.5	35 Ncm	Nobel Biocare® Unigrip	★
	NobelActive™/NobelReplace™ Conical Connection RP 4.3, 5.0	35 Ncm	Nobel Biocare® Unigrip	★
	NobelReplace™ NP 3.5	35 Ncm	Nobel Biocare® Unigrip	★
	NobelReplace™ RP 4.3	35 Ncm	Nobel Biocare® Unigrip	★
	NobelReplace™ WP 5.0	35 Ncm	Nobel Biocare® Unigrip	★
	NobelReplace™ 6.0	35 Ncm	Nobel Biocare® Unigrip	★
	Brånemark System™ NP 3.3	35 Ncm	Nobel Biocare® Unigrip	★
	Brånemark System™ RP 3.75, 4.0	35 Ncm	Nobel Biocare® Unigrip	★
	Brånemark System™ WP 5.0, 5.5	35 Ncm	Nobel Biocare® Unigrip	★
Straumann®				
	Bone Level 3.3 NC (Narrow CrossFit™)	35 Ncm	SCS Screwdriver	★
	Bone Level 4.1, 4.8 RC (Regular CrossFit™)	35 Ncm	SCS Screwdriver	★
	Standard/Standard Plus 4.8 RN (Regular Neck)	35 Ncm	SCS Screwdriver	★
	Standard/Standard Plus 4.8 WN (Wide Neck)	35 Ncm	SCS Screwdriver	★
	Standard Plus 3.3 NN (Narrow Neck)	35 Ncm	SCS Screwdriver	★
Zimmer Dental				
	Tapered Screw-Vent 3.5, 4.5, 5.7/ Tapered Screw-Vent 3.5, 4.5, 5.7 friction fit	30 Ncm	1.25 mm Hex	⬢
	Screw-Vent 3.3, 3.7, 4.5/ Screw-Vent 3.3, 3.7, 4.5 friction fit	35 Ncm	1.25 mm Hex	⬢
	SwissPlus™ 4.8	35 Ncm	1.25 mm Hex	⬢

## Implant Tool Loaner Program

It's difficult for any practice to maintain all the tools necessary to work on every platform. With our Implant Tool Loaner Program, now doctors are no longer limited in what they can prescribe and work on. Burdette can provide the exact equipment you need to seat our abutments on any implant—at no additional cost!



Questions? Call Burdette at 1-800-624-5301

## Impression Techniques - Open Tray Instructions

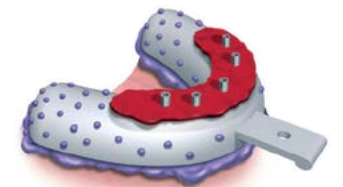
Step 1  
Remove Healing Abutment



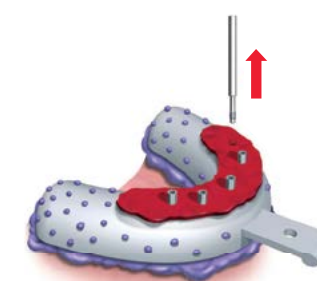
Step 2  
Place Open-tray Coping



Step 3  
Seat Tray Over Guide Pins



Step 4  
Unscrew Guide Pins



Step 5  
Replace Healing Abutment



Step 6  
Replace Guide Pins

